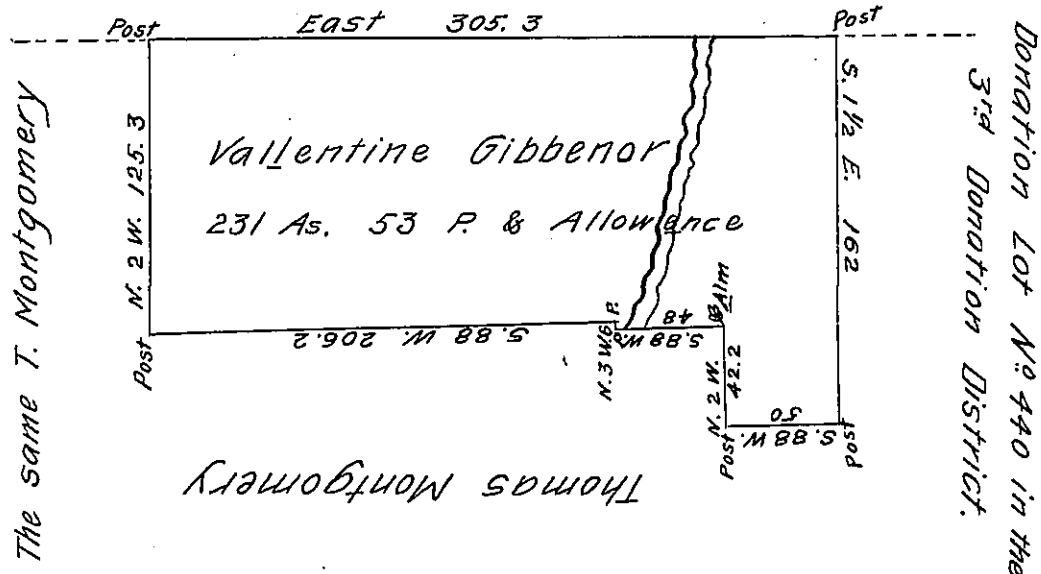


line Between the 3rd & 4th Donation Districts



Situate in Wolfcreek Township Mercer County on the West Branch of Wolfcreek Containing two hundred and thirty-one acres and fifty-three perches and allowance of six per cent. for Roads &c? As surveyed for Valentine Gibbenor in pursuence of his Improvement and Settlement and Residence thereon.

Surveyed November 1st 1845 by me

To John Laporte Esq^r S.G.

John Findley. D.S.

IN TESTIMONY that the above is a copy of the original remaining on file in the Department of Internal Affairs of Pennsylvania, made conformably to an Act of Assembly approved the 16th day of February, 1833, I have hereunto set my Hand and caused the Seal of said Department to be affixed at Harrisburg, this ninth day of January 1908.

Henry Howell
 Secretary of Internal Affairs.